



AI Readiness for Law Firms:  
A Five-Part Series for IT Leaders

**PART 4 -**  
**COMPLIANCE AND**  
**RISK MANAGEMENT**

[www.rizetechnologies.com](http://www.rizetechnologies.com)

# Introduction to Ebook Series

The legal industry stands at an inflection point. Artificial intelligence has moved from theoretical promise to practical reality, with tools that can draft contracts, conduct legal research, analyze discovery documents, and predict case outcomes. For mid-size law firms, the question is no longer whether to adopt AI, but how to do so responsibly, securely, and in compliance with ethical obligations.

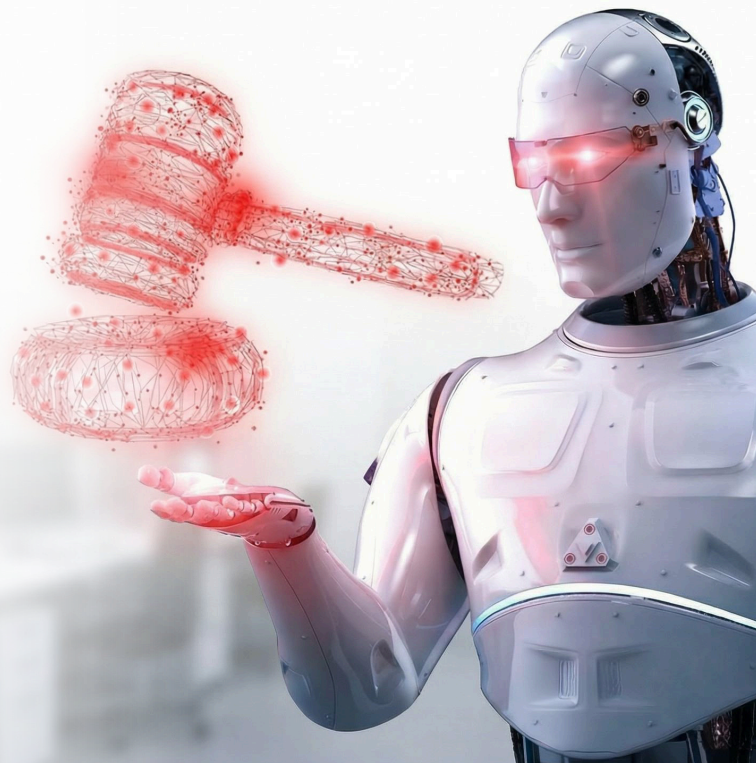
While firm leadership focuses on strategic AI adoption and attorneys explore use cases, IT teams face a critical challenge: building the technical foundation that makes safe, effective AI deployment possible. Without proper preparation, firms risk data breaches, ethical violations, regulatory non-compliance, and malpractice exposure.

This five-part series provides IT leaders at mid-size law firms with a practical roadmap for AI readiness, covering the technical, security, and operational considerations essential for successful AI integration. If law firms lack the appropriate IT resources on their staffs, the professional services team at Rize Technologies is available to help them plan and implement a customized roadmap for AI readiness.



# Compliance and Risk Management

AI adoption introduces novel compliance challenges that extend beyond traditional IT security concerns. The **regulatory landscape is evolving rapidly**, and firms need to stay ahead of requirements rather than scrambling to achieve compliance after the fact.



What makes AI compliance particularly complex for law firms is the intersection of multiple regulatory frameworks—data protection laws, professional responsibility rules, industry-specific regulations, and emerging AI-specific legislation—each with different requirements that may conflict or overlap in unexpected ways. Traditional compliance approaches that work for conventional software often fall short with AI because the technology itself is less transparent, the data flows are more complex, and the potential for unintended consequences is higher.

You're not just managing compliance with existing rules; you're also preparing for regulations that might not yet exist but are clearly coming. Forward-thinking compliance planning now will prevent costly remediation later and position your firm as a responsible AI adopter in the eyes of clients, regulators, and professional liability carriers.

# Map Regulatory Requirements

Different AI use cases trigger different regulatory obligations, and the complexity can be daunting. Data protection laws like GDPR and CCPA impose requirements around consent, data minimization, and individual rights that apply to AI processing. Using AI vendors with international data centers may trigger cross-border transfer restrictions. Healthcare, financial services, and government matters may involve specialized AI compliance requirements that go beyond general data protection rules.

Professional responsibility rules requiring competence, confidentiality, and diligence apply to AI use, even though most bar authorities haven't issued detailed guidance about what that means in practice. You're navigating an area where ethical obligations are clear but practical implementation is still being figured out. Monitor emerging AI-specific legislation that may impose transparency, testing, or documentation requirements—several jurisdictions are considering or implementing such rules.

Create a compliance matrix that maps each planned AI use case against applicable regulations. This exercise often reveals gaps that need remediation before deployment. But it's better to discover a compliance issue during planning than during a bar investigation or regulatory audit.

# Address Ethical AI Concerns

Law firms have unique ethical obligations that extend to technology use in ways that might surprise attorneys accustomed to treating technology as ethically neutral. AI bias is a real concern, particularly in tools used for hiring, conflict checking, case evaluation, or client intake. An AI tool that systematically undervalues certain types of cases or exhibits bias against protected classes could violate anti-discrimination laws and professional responsibility rules.

Testing for bias isn't simple—you need diverse test data sets and clear metrics for what constitutes acceptable performance. Consider creating an AI ethics committee that reviews planned AI implementations for potential ethical concerns before deployment. This committee should include attorneys from diverse backgrounds who can spot bias issues that might not be obvious to the technical team.

Transparency matters too. Develop disclosure policies about AI use in client communications. Some clients will want to know if AI is being used on their matters, and being proactive about disclosure builds trust. Establish human review requirements for AI-generated content before client delivery—no AI output should reach a client without an attorney reviewing it for accuracy, appropriateness, and quality.

The risk of AI "hallucinations"—fabricated citations, facts, or legal analysis that AI generates convincingly but incorrectly—requires explicit verification procedures. Several high-profile cases have involved attorneys submitting court filings with AI-generated fake citations. Your procedures need to prevent your firm from becoming the next cautionary tale.

# Prepare Incident Response Capabilities

Your existing incident response plan probably doesn't contemplate AI-specific scenarios. What happens when an AI vendor experiences a security incident? What's your protocol for addressing situations where AI output contains material mistakes that reach clients or courts? How do you respond when you discover attorneys using non-approved AI tools containing firm data? What's the plan if AI models are manipulated or corrupted?

Develop response procedures for each scenario, including communication templates for notifying clients, bar authorities, and regulators about AI-related incidents. These templates need to strike a difficult balance—being transparent about what happened without creating unnecessary panic or legal exposure.

Ensure your professional liability insurance covers **AI-related claims and notify carriers about planned AI deployments**. Some policies might exclude AI-related claims or require specific procedures for coverage to apply. It's better to clarify coverage now than discover a gap when facing a claim.



In Part 5 of this 5-part series, we will look at specific change management strategies for your firm to ensure minimal disruption and maximum adoption of AI tools. Be sure to download the entire series by visiting the Resources section on [rizetechnologies.com](https://rizetechnologies.com)



## About This Guide

This guide was developed based on emerging best practices in legal technology, cybersecurity, and professional responsibility for AI adoption in law firms, but it does not constitute legal, technical, or professional advice. While we always strive to provide accurate information, we make no warranties regarding completeness or accuracy, and we assume no liability for any damages, losses, or consequences arising from your use of or reliance on this information. Each firm is solely responsible for evaluating the applicability of this guidance to their situation and for all decisions and actions taken.

## About **Rize Technologies**

Rize Technologies helps law firms thrive in today's fast-moving, AI-powered world. With more than a decade of experience serving the legal industry, we deliver end-to-end IT solutions that keep firms secure, productive, and ready for what's next. From 24/7 managed IT and cloud services to advanced cybersecurity, data protection, disaster recovery, and AI readiness, every solution is built around the unique needs of each firm. Our white-glove support and proactive approach to IT helps minimize downtime and maximize confidence. Discover how your firm can rise higher at

[rizetechnologies.com](https://rizetechnologies.com)